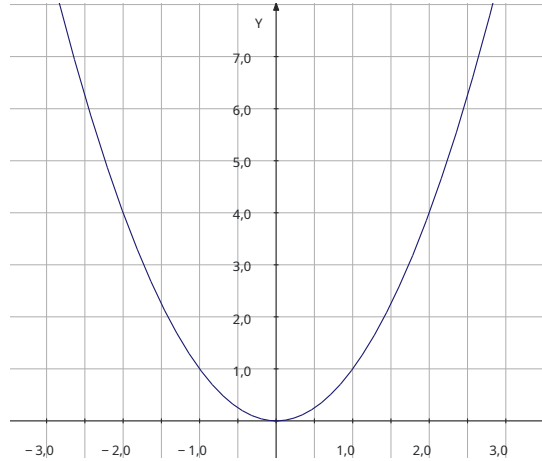


Funciones Cuadráticas

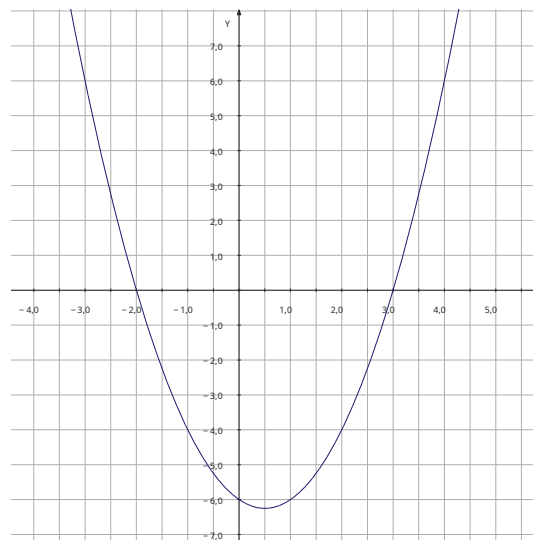
$$x_1, x_2 = \frac{-b \pm \sqrt{b^2 - 4ac}}{2a}$$

$$\Delta = b^2 - 4ac$$

$\Delta = 0$ \longrightarrow Dos raíces reales coincidentes



$\Delta > 0$ \longrightarrow Dos raíces reales diferentes



$\Delta < 0$ \longrightarrow Dos raíces complejas conjugadas

